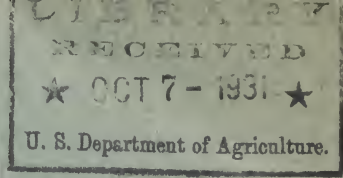


Historic, Archive Document

Do not assume content reflects current scientific knowledge, policies, or practices.

62.61



Autumn Specials

From our Complete Lists



Evergreens, trees and shrubs best adapted for Autumn planting. Special prices for Fall 1931—in small sizes as well as large.



Kelsey Nursery Service

Fifty Church Street, New York City

We can make immediate shipment of Evergreen stock—from now up to October 1st with perfect safety. On Deciduous varieties, the best shipping time is from late September to late November. Orders will also be gladly accepted now for delivery next spring if desired.

KELSEY NURSERY SERVICE

1. **We furnish high quality stock.** Kelsey Nursery stock is grown where it grows best; always of course, with regard to shipping convenience. Of more than seventy nurseries with over twenty thousand acres of stock we select the nearest nursery growing the material of the quality and grade you may want.

2. **We furnish our stock at the lowest prices made possible by mass production.** Prices of nursery stock vary greatly. One nursery grows stock on land worth, say, \$4,000 or \$5,000 per acre. The stock is no better than that grown at a nearby nursery where land is worth perhaps \$400.00 per acre. Nature has no partiality in this respect. We are, therefore, enabled to sell excellent stock at very low prices.

3. **We are an entirely responsible source of supply.** Established Fifty Years ago, in 1878, we still have among our customers many who have been patrons for forty years or more. In all our dealings we are always willing to make things right on any errors or just causes for complaint.

4. **Our Guarantee**—Stock to be in good condition when furnished. We will, however, replace any and all losses at half price.

5. **Scarce and rare varieties:** Why look through a dozen nursery catalogues for them? Send us your list and we will quote promptly. This Short Guide is necessarily confined to standard varieties, but with our facilities we can furnish almost any variety or size grown in the United States.

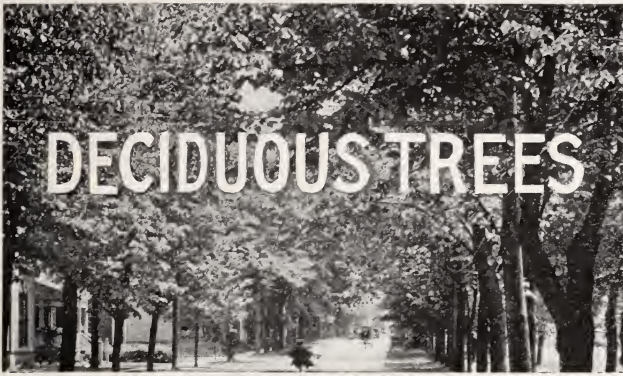
6. **The policy of this Company** is to make and keep good will by careful and prompt service.

PRICES—net; packing at cost. Five will be supplied at the 10 rate, 25 at the 100, and 250 at the 1000 rate.

Claims for errors or shortage to be made within ten days.

KELSEY NURSERY SERVICE

Fifty Church Street, New York City



GOOD trees for street planting have been extremely scarce. This Autumn we offer a good supply of them in the best varieties. Such sizes as we offer here are at real bargain prices. Other sizes available and will be gladly quoted on request. Most of the varieties on these pages can be shipped either from the East or from the Middle West, representing a considerable saving in freight. We will gladly estimate delivery costs in advance. Not in years has such an offering of deciduous shade trees been made.

LINDEN (Tilia)

T. vulgaris (European Linden)	(100)	(1000)
6 to 8 feet.....	150.00	1300.00
8 to 10 feet.....	200.00	
1¼ to 1½ inches.....	250.00	
1½ to 1¾ inches.....	300.00	

T. Americana (Basswood)		
6 to 8 feet.....	150.00	1300.00
8 to 10 feet.....	200.00	1750.00
1¼ to 1½ inches.....	230.00	
1½ to 1¾ inches.....	275.00	
1¾ to 2 inches.....	310.00	
2 to 2½ inches.....	450.00	

MAPLE (Acer)

A. Platanoides (Norway Maple)		
Fine trees. Ready for street planting in the larger sizes.		
6 to 8 feet.....	160.00	
8 to 10 feet.....	230.00	1950.00
1¼ to 1½ inches.....	280.00	2500.00
1½ to 1¾ inches.....	350.00	3200.00
1¾ to 2 inches.....	430.00	
2 to 2½ inches.....	500.00	
2½ to 3 inches.....	650.00	

A. Saccharum (Sugar or Rock Maple)		
6 to 8 feet.....	125.00	
8 to 10 feet.....	190.00	
1¼ to 1½ inches.....	250.00	
1½ to 1¾ inches.....	310.00	
1¾ to 2 inches.....	375.00	
2 to 2½ inches.....	550.00	
2½ to 3 inches.....	725.00	

MAPLE WHIPS FOR LINING OUT		
The following prices include delivery to any freight station in U.S.A.		
Norway Maple	(1000)	
5 to 6 feet.....	\$	340.00
6 to 7 feet.....		450.00
7 to 8 feet.....		500.00
8 to 9 feet.....		625.00
Schwedler's Maple		
5 to 6 feet.....		850.00
6 to 7 feet.....		1075.00
7 to 8 feet.....		1350.00

OAK (Quercus)

Q. palustris (Pin Oak)	(100)	(1000)
6 to 8 feet.....	250.00	
8 to 10 feet 1 to 1¼ in.	320.00	

Q. rubra (Red Oak)		
6 to 8 feet.....	165.00	
8 to 10 feet.....	225.00	
1¼ to 1½ inches.....	275.00	
1½ to 1¾ inches.....	320.00	
1¾ to 2 inches.....	415.00	

ELM (Ulmus)

U. Americana (American Elm)		
1 to 1¼ inches caliper..	95.00	700.00
1¼ to 1½ inches.....	130.00	1000.00
1½ to 1¾ inches.....	175.00	1500.00
1¾ to 2 inches.....	230.00	1950.00
2 to 2½ inches.....	300.00	2700.00
2½ to 3 inches.....	500.00	

U. glabra (Scotch or Wych Elm)		
6 to 8 feet.....	100.00	
8 to 10 feet 1 to 1¼ inches	140.00	
1¼ to 1½ inches.....	190.00	
1½ to 1¾ inches.....	250.00	

U. Campestris (English Elm)

One of the best trees for street planting in America. Does well in City conditions. Highly recommended by the late Dr. Wilson.

6 to 8 feet.....	125.00
8 to 10 feet.....	150.00

PLANE (Platanus)

P. orientalis (Oriental Plane)	(100)	(1000)
Another ideal city tree. One of the few trees really adapted to city streets. Will thrive under poor air and soil conditions. We offer exceptionally fine stock.		
1¼ to 1½ inches.....	150.00	1325.00
1½ to 1¾ inches.....	190.00	1800.00
1¾ to 2 inches.....	250.00	2250.00
2 to 2½ inches.....	350.00	

HERE ARE HURRY TREES



THE CHINESE (OR SIBERIAN) ELM—ULMUS PUMILA

Where screen or shade is wanted in a hurry—and yet permanent screen and pleasing shade—page the new Chinese Elm. Phenomenal tales of its speedy growth and hardiness are told and most of them strangely enough seem to be true. It has few troubles. The only one seems to be a distaste for heavy or poorly drained soils. It grows slowly on such land, and does best on sandy or dry situations. Each tree, upon planting, should be trimmed back. These trees offered below are grown for one season or more in New England and were raised from hardy North China Seed.

	(Each)	(10)	(100)
6 to 8 feet.....	\$1.75	\$15.00	\$135.00
8 to 10 feet.....	3.00	27.50	260.00
10 to 12 feet.....	3.75	36.00	350.00

LOMBARDY POPLAR

This fast growing variety with its narrow height of trembling leaves is as well known as it is beautiful. An ideal quick screen.

	(Each)	(10)	(100)
6 to 8 feet.....	\$1.00	\$ 7.00	\$ 50.00
8 to 10 feet.....	1.50	10.00	70.00
10 to 12 feet.....	2.00	15.00	100.00
12 to 14 feet.....	3.25	27.00

SILVER MAPLE

A fine native. Very fast growing and with beautiful green leaves silver on the under surface.

8 to 10 feet.....	\$1.50	\$14.00	\$60.00
10 to 12 feet.....	2.25	20.00	80.00

(Note extremely low quantity rates)

GRACEFUL WEeping WILLOW

Thurlow's Weeping Willow (elegantissima) is a vigorous upright grower with fine drooping branches. Best for dry land.

	(Each)	(10)
6 to 8 ft.....	\$1.60	\$14.00
8 to 10 ft.....	2.00	18.00

BABYLONIAN WEeping WILLOW

The traditional tree for planting by the water. Pictured at the right.

	(Each)	(10)
6 to 8 ft.....	\$1.60	\$14.00
8 to 10 ft.....	2.00



CHARMING TREES FROM THE ORIENT

JAPANESE FLOWERING CHERRIES

These are among the very first things to bloom in the Spring and extremely choice and scarce. We have several other varieties available in limited quantities. A small tree, entirely hardy. And notice these prices.

Named Varieties—as listed below.

3 to 4 feet.....	\$2.00	\$18.00	\$170.00
------------------	--------	---------	----------

Other sizes on request.

Naden (Sieboldi) (also called Kofugen) Double pink.

Kwanzan (Sekizan)—Double old rose.

Shirofugen—Double white, pink shading.

Yoshino Cherry—Single pink. Fast growth.
25 of one variety at the 100 rate.

Siberian Weeping Cherry. A fine flowering tree with single white blossoms.

6 foot stems.....	\$3.00 each		
-------------------	-------------	--	--

JAPANESE WEeping CHERRY

Among the unusual trees comes this exotic, with delicate pendant branches clothed with pink. We offer good heads on 6 foot stems at \$3.50 each. (\$30.00 for 10.) We can quote on many other varieties.

JAPANESE BLOODLEAF MAPLE

This dwarf tree makes a superb lawn specimen or in the shrub border its brilliant red makes a striking contrast. We offer only grafted trees.

	(10)	(100)
1 year old grafts, 10 in. B. & B.	\$10.00	\$90.00
18 to 24 inches.....	(Each) 3.50	(10) 30.00
2 to 2½ feet.....	7.50	65.00

Ginkgo or Maidenhair Tree (Ginkgo biloba)

EHK—60 to 70 feet. A curious tree. Its nearest relatives died out during the last Ice age. This tree is unique. So far as history can follow it, it has been the sacred tree in Chinese temples. A hardy tolerant variety with good foliage and shape.

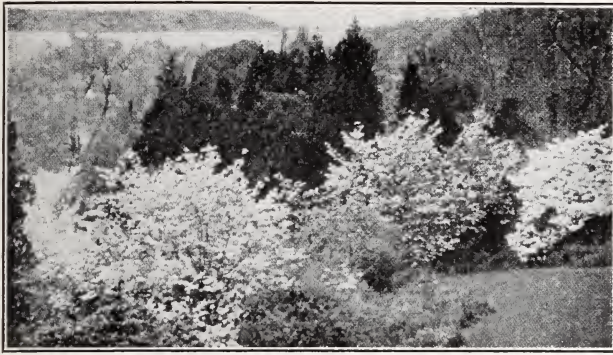
6 to 8 feet.....	(Each) \$3.50
8 to 10 feet.....	4.50

Purple-leaf Plum (Prunus pissardi)

EHK—8 to 10 feet. Striking purple foliage which does not fade in late Summer. Covered with pink flowers in May.

4 to 5 feet.....	(Each) \$1.00	(10) \$9.00
------------------	---------------	-------------

TREES OF UNUSUAL CHARM AND BEAUTY



PAUL'S SCARLET HAWTHORNE

Gorgeous color. Blooms in May. A fine specimen or subject for mass planting. We offer also white and pink flowered varieties. A Hawthorne in bloom is a sight never to be forgotten.

	(Each)	(10)	(100)
3 to 4 feet.....	\$1.50	\$12.50	\$100.00
4 to 5 feet.....	1.75	15.00	110.00
5 to 6 feet.....	2.00	17.50	150.00

Pink and white flowering Hawthorne at the same prices.

THE EUROPEAN MOUNTAIN ASH

Its showy red berries appear in early Summer and remain until frost.

	(Each)	(10)	(100)
5 to 6 feet.....	\$1.00	\$ 9.00	\$ 75.00
6 to 8 feet.....	1.50	12.00	100.00
8 to 10 feet.....	2.00	17.50	150.00

THE PURPLE BEECH

Its smooth gray bark and unusual colored foliage make this a unique tree. Either as single specimens or in clumps, it is effective. 18 to 24 inches, \$3.00 each. (\$25.00 per 10.)

THE FLOWERING DOGWOOD

What is Spring without the white and pink Dogwood flowers? A glory of blossom, it is a familiar but never tiring spectacle.

White-flowering	(Each)	(10)	(100)
2 to 3 feet.....	\$.85	\$ 8.00	\$ 70.00
3 to 4 feet.....	1.00	9.00	85.00
4 to 5 feet.....	1.50	13.50	125.00
5 to 6 feet.....	2.50	22.50

Pink-flowering (grafted)

18 to 24 inches.....	\$1.60	\$15.50	\$150.00
2 to 3 feet.....	2.75	25.00	225.00
3 to 4 feet.....	3.50	32.50	300.00
4 to 5 feet.....	7.50	65.00	500.00

Small sizes of one-year-old grafted varieties at very low prices will be found on page 10. Red-flowering Dogwood, Japanese Bloodleaf Maple and many other beautiful trees appearing on these pages may be found there.

THE Dogwood, Flowering Cherries, Crabs, Hawthorne and Mountain Ash are only at their best when seen in masses and if properly arranged such a mass planting can be a riot of color from earliest spring until July.

FLOWERING CRABS (Malus)

These superb trees are effective for lawn specimens, but even more important when used plentifully in woodland and mass planting.

There is a wide range of size and shape and color of bloom and the following list includes only a few of those we are in a position to furnish. The quantity prices are real bargains.

Atrosanguinea—Carmine Crab.

	(Each)	(10)	(100)
3 to 4 feet.....	\$1.00	\$ 9.50	\$44.00
4 to 5 feet.....	1.25	11.00	65.00

Bechtel's Crab—Double pink.

3 to 4 feet.....	\$1.50	\$12.00	\$60.00
4 to 5 feet.....	2.00	15.00	90.00

Floribunda—Single, rose pink.

3 to 4 feet.....	\$1.00	\$ 9.50	\$44.00
4 to 5 feet.....	1.25	11.00	65.00

Neidzwetzyana, Redvein Crab—Entirely red—flowers, branches, leaves, and fruit.

4 to 5 feet.....	\$1.25	\$11.00	\$ 90.00
7 to 8 feet.....	3.00	25.00	200.00

Parkman's Crab—Double rosy red flowers.

3 to 4 feet.....	\$1.00	\$ 9.50	\$80.00
4 to 5 feet.....	1.25	11.00	95.00

Schiedeckeri—Early in bloom. Rosy pink.

3 to 4 feet.....	\$1.00	\$ 9.50	\$44.00
4 to 5 feet.....	1.25	11.00	65.00



Specimen Flowering Dogwood

INTERESTING NATIVE TREES

WITH so many varieties from other lands to choose from, the planter of trees and maker of gardens is in danger of forgetting the beauty and value of many of our native types. American trees include some of the most beautiful in the world and are moreover adapted by their very nature to our climate. They grow easily, in other words. Kelsey Nursery Service makes available very many of the native varieties (a few of which are listed on this and other pages). We are always glad to quote on varieties or sizes not here mentioned. Generally speaking, the Autumn is an excellent time for planting deciduous varieties—from middle September until late November. There are a few exceptions, due not to the season but to the nature of the trees—such are Beech and Hickory—which we therefore quote with a ball of earth. Everything else in this list may be planted with every bit as much success as during the spring season.

Vase-shaped American Elm

Identical with the American Elm, but grown by budding from selected well shaped parents. A sensible precaution against your Elm trees turning out to be unsightly or unshapely, at maturity.

	(Each)	(10)	(100)
6 to 8 feet.....	\$2.00	\$17.50	\$160.00
8 to 10 feet.....	2.75	25.00	200.00
10 to 12 feet.....	3.50	30.00	280.00

ASH (Fraxinus)

F. Americana (Amer. White Ash)

Smoke resistant and withstanding wet land conditions.

6 to 8 feet.....	\$1.25	\$11.00	\$ 60.00
8 to 10 feet.....	1.50	90.00
1½ inch caliper.....	200.00
2 inch caliper.....	250.00

BEECH (Fagus)

F. Americana (American Beech)

6 to 8 feet B. & B.	\$50.00	\$300.00
--------------------------	---------	----------

HACKBERRY (Celtis)

C. Occidentalis (Northern Hackberry)

6 to 8 feet.....	\$10.00	\$ 77.00
8 to 10 feet.....	15.00	100.00
1½ to 1¾ inches.....	175.00
1¾ to 2 inches.....	200.00
2 to 2½ inches.....	250.00

HICKORY (Hicoria)

Shellbark Hickory

	(Each)	(10)	(100)
6 to 8 feet B. & B.	\$25.00	\$200.00
8 to 10 feet.....	30.00	250.00

SYCAMORE (Platanus)

P. Occidentalis (Sycamore)

6 to 8 feet.....	\$10.00	\$ 70.00
8 to 10 feet.....	12.00	90.00
1¼ to 1½ inches.....	130.00
1½ to 2 inches.....	195.00

BASSWOOD (Tilia)

T. Americana (Basswood)

6 to 8 feet.....	\$20.00	\$150.00
8 to 10 feet.....	25.00	200.00
1¼ to 1½ inches.....	230.00
1½ to 1¾ inches.....	275.00
1¾ to 2 inches.....	310.00
2 to 2½ inches.....	450.00

Redbud or Judas Tree (Cercis canadensis)

A small tree notable for the profusion of bright red flowers which appear before the leaves in early Spring.

4 to 5 feet.....	\$1.25	\$12.00
5 to 6 feet.....	1.75

WE wish to announce that we are in a position to make quotation upon large trees—planted and guaranteed—of practically all varieties and for any location in the Eastern United States. The work is done by thoroughly trained men and only the finest specimens are planted. The terms are more reasonable than generally demanded for this sort of work. Inquiries are solicited.



EVERGREEN TREES

beauty this winter? Larger specimens—up to twenty or thirty feet in height—may safely be moved all Autumn and Winter. We are in a position to quote prices for such trees, planted properly and Guaranteed to live.

EVERGREENS are essentially things of beauty both in Winter and Summer.

But it is in Winter that their effectiveness is most appreciated. Now as the leaves of Deciduous trees and shrubs are beginning to lose their green and drop off, consider the advantage of evergreen trees and shrubs. They do not grow quite so quickly, but for many positions this is a great advantage. Like so many other commodities in this Modern Age—"they cost more and they're worth more." On the next few pages and again at the back of this brief price-list are a very few of the many beautiful and useful varieties we have to offer. They can safely be planted at this time—up to the end of September or later. Why not enjoy their fragrant

PINES AND SPRUCES



THE AUSTRIAN PINE

Pictured above. A shapely specimen and very hardy. Satisfactory for difficult conditions—such as in city air, or on the seashore.

	(10)	(100)
18 to 24 inches.....	\$12.00	\$ 90.00
2 to 3 feet.....	15.00	100.00
3 to 4 feet.....	30.00	200.00

RIGA TYPE SCOTCH PINE

A beautiful tree. The trunk is tall and straight with reddish branches. Never grows straggly like ordinary Scotch Pine. As great an improvement over the type, in its way, as Koster Spruce is over Colorado.

	(10)	(100)
18 to 24 inches.....	\$15.00	\$100.00
2 to 3 feet.....	17.50	125.00
3 to 4 feet.....	30.00	200.00
4 to 5 feet.....	40.00	300.00

THE BLUE SPRUCES

The Colorado Spruce is the source. It varies in color from green to blue. The Blues are sold as Colorado Blue Spruce. Special super-blue types are grafted. One of the best is Koster's Blue Spruce.

Englemann Spruce also runs from green to steel blue. We offer in this, however, only unselected trees of all colors in small sizes. See page 16 for prices.

Colorado Selected Blue

	(Each)	(10)
12 to 18 in.....	\$ 3.00
18 to 24 in.....	4.00
2 to 3 ft.....	7.00
3 ft.....	9.00
4 ft.....	12.50

Koster's Blue Spruce

These are all grafted trees—specimens.

15 to 18 in.....	\$ 6.00	\$ 50.00
18 to 24 in.....	9.00	80.00
2 to 2½ ft...	11.00	100.00
2½ to 3 ft...	13.00	120.00

THESE are the hardiest, easiest-to-grow evergreens there are. And the fastest growing, as well—except for a few dwarf varieties such as the Mugho Pine. Generally speaking, Pines like gravelly or sandy soil and Spruce likes good loam—will grow well in shallow soil also, whereas the Pines are deep-rooting trees. All trees here dug with Ball of earth and burlapped. (B. & B.)

THE NORWAY (Red) PINE

This variety, (*Pinus resinosa*) is deservedly the most popular evergreen for the East. Practically free from disease or insect pests, it is a vigorous grower and makes a fine specimen, or a dense hedge. Stands wind and exposure well—as do all Pines.

	(10)	(100)
18 to 24 inches.....	\$15.00	\$100.00
2 to 3 feet.....	22.50	120.00
3 to 4 feet.....	30.00	190.00
4 to 5 feet.....	35.00	260.00
5 to 6 feet.....	55.00	400.00

MUGHO (Dwarf) PINE

A dwarf type selected from seedling Mountain Pines for dense, low-growing habit. For this reason it is important how carefully they are selected. We offer nothing but true dwarf trees.

	(Each)	(10)	(100)
12 to 15 inches.....	\$1.50	\$13.50	\$100.00
15 to 18 inches.....	2.00	17.50	150.00
18 to 24 inches.....	3.00	27.50	200.00

EASTERN WHITE SPRUCE

By far the best of the fast-growing Spruces for the East. A beautiful frosty green, and of dense shapely appearance.

2 to 3 feet.....	\$2.00	\$17.50	\$120.00
3 to 4 feet.....	3.00	27.50	175.00
4 to 5 feet.....	4.00	37.50	300.00
5 to 6 feet.....	5.00	45.00	450.00



SOME INTERESTING EVERGREENS

JUNIPERS

Pfizer's Juniper

Makes a dense broad bush about six feet high. Unique silver gray needles in spring. Very hardy, succeeding in sun or shade and even in city air.

	(Each)	(10)	(100)
1 to 1½ feet.....	\$2.50	\$22.50
1½ to 2 feet.....	3.50	30.00
2 to 2½ feet.....	4.00	38.00

Creeping Juniper (*J. Sabina tamariscifolia*)

A compact mat of bluish-green, which does not change color in winter. One of the best of the dwarf junipers.

	(Each)	(10)	(100)
12 to 15 inches.....	\$2.00	\$18.00	\$175.00
15 to 18 inches.....	2.50	24.00	225.00
18 to 24 inches.....	3.50	32.50

Prostrate Juniper (*J. communis canadensis*)

A fine spreading juniper, low-growing and lusty. Does well on sandy soil.

	(Each)	(10)	(100)
2 to 3 feet.....	\$2.50	\$22.50	\$175.00



THE DOUGLAS FIR
(*Pseudotsuga taxifolia*)

A fine evergreen in every way. It requires fairly good soil and good drainage. Foliage is soft bluish green. Fast growing. Pictured above.

	(10)	(100)
18 to 24 inches.....	\$12.00	\$ 80.00
2 to 3 feet.....	16.00	120.00
3 to 4 feet.....	40.00	300.00
4 to 5 feet.....	50.00	400.00

TRUE CEDARS (*Cedrus*)

Cedar of Lebanon (*Cedrus Libani*)

Large tree, with wide-spreading, horizontal branches. Round headed. Its beauty is historic, and the variety is of peculiar interest for its religious associations.

	(10)	(100)
3 to 4 feet.....	\$40.00	\$350.00

Silver Mt. Atlas Cedar (*C. atlantica glauca*)

An old favorite, hardy along the eastern coast from Rhode Island south. Fine color.

	(10)	(100)
12 to 18 inches.....	\$30.00	\$250.00

Cryptomeria lobbi compacta

The hardiest *Cryptomeria*.

15 to 18 inches.....	\$17.00	\$150.00
18 to 24 inches.....	20.00	175.00
3 to 3½ feet.....	50.00	400.00

ARBORVITAE (*Thuja*)

American Arborvitae

A fine evergreen for specimen or hedge. Easily grown. Pyramidal form.

	(Each)	(10)	(100)
18 to 24 inches.....	\$1.25	\$11.00	\$ 60.00
2 to 3 feet.....	1.50	14.00	80.00
3 to 4 feet.....	3.00	27.50	150.00

Pyramidal Arborvitae

One of the best of the species. Very dense and of good rich green color, which does not change in winter. Neater and more shapely than the above. Ideal for hedges.

	(Each)	(10)	(100)
18 to 24 inches.....	\$1.75	\$16.50	\$120.00
3 to 3½ feet.....	3.50	32.50	200.00
3½ to 4 feet.....	4.50	42.50	300.00
4 to 4½ feet.....	5.50	50.00	350.00
4½ to 5 feet.....	6.50	60.00	400.00

Douglas Pyramidal Arborvitae

Similar to Pyramidal Arborvitae in every way, but with more interesting closely set, fern-like branches.

	(Each)	(10)	(100)
2 to 3 feet.....	\$2.50	\$24.00	\$150.00
3 to 4 feet.....	3.50	32.50	200.00

FLOWERING EVERGREENS

Hardy Evergreen Azaleas

These are unique and unusual. Hinodigiri is hardy in Westchester County and the new Hybrids as far as Boston. Thoroughly evergreen—superb color—dainty form.

Azalea Hinodigiri

A dwarf bush thickly covered with gorgeous red flowers in May.

	(10)	(100)
6 to 8 inches B. & B.....	\$10.00	\$ 90.00
8 to 10 inches.....	15.00	135.00
10 to 12 inches.....	20.00	180.00

New Hardy Hybrid Azaleas

A triumph of modern horticulture. The new "Kaempferi-Hybrids" are absolutely hardy and thoroughly evergreen. Shades of pink and red. We offer budded plants: mixed colors.

	(Each)	(10)	(100)
1 to 1½ feet.....	\$4.50	\$37.50	\$300.00
1½ to 2 feet.....	6.00	50.00	400.00

HARDY HYBRID RHODODENDRONS

The listed varieties are the most satisfactory. All plants below are shapely and budded to bloom this spring.

- Amphion—clear pink with white eye.
- Catawbiense album—pure white.
- Catawbiense grandiflorum—rosy lilac.
- Mrs. C. S. Sargent—deep rose-red.
- Roseum elegans—clear rose. A compact grower.
- Everestianum—rosy lilac. Compact.
- President Lincoln—lilac pink with brown eye.

	(Each)	(10)	(100)
1 to 1½ feet.....	\$ 5.00	\$ 47.50	\$ 400.00
1½ to 2 feet.....	7.50	70.00	600.00
2 to 2½ feet.....	12.00	110.00	975.00
2½ to 3 feet.....	15.00	135.00	1200.00

And for economy, smaller sizes 2-year old grafts about 12 inches high. Ten for \$25.00.



THE DAINTY DAPHNE

(Daphne Cneorum—Garland Flower)

A dwarf evergreen shrub delightful above all other garden subjects. Now in its marvellous second blooming—for it is covered with fragrant pink flowers in May and again in September. Requires a sunny position. A charming border-plant.

	(Each)	(10)	(100)
6 to 9 inches B. & B. \$.75	\$ 6.50	\$ 50.00
9 to 12 inches.....	1.00	9.00	75.00
12 to 15 inches.....	1.50	12.50	100.00
15 to 18 inches spread	2.00	17.50	150.00

PACHYSANDRA—Living Carpet

A charming ground-cover of evergreen leaves about six inches high. So dense as to really hide the ground. Enormously useful in dense shade, where grass will not grow well.

	(10)	(100)	(1000)
2 yr.-old from pots....	\$2.10	\$15.00	\$125.00

NATIVE RHODODENDRON IN CARLOTS



Rhododendron is splendid for thick mass planting.

For years we have specialized in these fine evergreen shrubs. We offer some extremely low prices for collected Rhododendron Maximum and Kalmia latifolia (Mountain Laurel). The plants are dug with a good ball and packed in the car carefully for delivery in good condition. Strong clumps with several branches. Fine for mass planting. Carloads only. Freight extra from nearby Pennsylvania.

Rhododendron Maximum or Kalmia Latifolia

SINGLE DECK

DOUBLE DECK

Size	Number of Plants	Total Cost	Cost Each
2—3'	200	\$145.00	72½c
3—4'	150	145.00	97c
2—3'	400	290.00	72½c
3—4'	300	290.00	97c

Assorted cars at proportionate prices.

YOUNG ARISTOCRATS



Red-Leaf Japanese Maple *Viburnum Rhytidophyllum* *Purple Beech* *Red-flowering Dogwood*

Photographed on Long Island, August 1, 1931—now ready to ship.

UNUSUAL and rare varieties . . . true to name because they are grafted . . . easy to grow because they have already passed a season out-of-doors. Some winter protection is desirable, but no other special treatment. Many of the sizes are offered Balled and Burlapped for still easier handling. Where so noted, please remember that Dutch burlap is used and can be planted without removing from the plant. This is an amazing opportunity to plant rare and delightful kinds at little cost.

ACER (Maple)			
<i>A. palmatum atropurpureum</i> (Red-leaved Japanese Maple)	(10)	(100)	
1 year, 10 to 15 in. B. & B.	10.00	90.00	
<i>A. purpureum dissectum</i> (Cut-leaved Red Japanese Maple)			
1 year, 10 to 15 in. B. & B.	12.50	105.00	
CORNUS (Dogwood)			
<i>C. florida rubra</i> (Red-flowered)			
1 year, 12 to 18 in. B. & B.	10.00	80.00	
AESCULUS (Horse-chestnut)			
Double red-flowering—1 year		90.00	
FAGUS (Beech)			
<i>F. Sylvatica pendula</i> (Weeping)			
1 year, 12 to 18 in. B. & B.	10.00	90.00	
<i>F. Sylv. heterophylla</i> (Fernleaf)			
1 year, 12 to 18 in. B. & B.	12.50	105.00	
<i>F. Sylv. riversii</i> (Purple Beech)			
1 year, 12 to 18 in. B. & B.	10.00	90.00	
MAGNOLIA			
<i>M. Soulangeana</i>			
1 year, 10 to 12 in. B. & B.	17.50	150.00	
2 year, 14 to 20 in. B. & B.		200.00	
<i>M. stellata</i>			
1 year, 10 to 12 in. B. & B.	20.00	180.00	
2 year, 14 to 20 in. B. & B.		225.00	
<i>M. soulangeana nigra</i>			
1 year, 10 to 12 in. B. & B.	20.00	180.00	
2 year, 14 to 20 in. B. & B.		225.00	
VIBURNUM			
<i>V. Carlesii</i>			
1 year, 8 to 12 in. B. & B.	10.00	90.00	
<i>V. Rhytidophyllum</i> (Evergreen)			
1 year, 12 to 15 in. B. & B.	9.00	75.00	
BIOTA (Oriental Arborvitae)	(10)	(100)	
<i>B. aurea nana</i> (Golden Dwarf)		50.00	
<i>B. aurea conspicua</i>		70.00	
CEDRUS (Cedar)			
<i>C. Atlantica glauca</i> (Blue Atlas Cedar)		150.00	
CUPRESSUS (Cypress)			
<i>C. Triumph of Boskoop</i>			
2 year, 22 to 28 in. B. & B.		110.00	
CRYPTOMERIA			
<i>C. Lobbi</i>			
1 year, 10 to 12 in. B. & B.	11.00	90.00	
JUNIPERUS (Junipers)			
<i>J. Virginiana glauca</i>			
<i>J. Virg. Cannarti</i>			
<i>J. Virg. Schottii</i>			
<i>J. Virg. Keteleri</i>			
<i>J. elegantissima Lee</i>			
<i>J. chinensis</i>			
1 year grafts, 10 in.		50.00	
PICEA (Spruce)			
<i>P. Kosteri</i> (Koster Blue)			
1 year, 6 to 8 in. B. & B.	13.50	120.00	
2 year, 10 to 15 in. B. & B.		150.00	
<i>P. Moorheimi</i> (Moorheim Blue)			
1 year, 6 to 8 in. B. & B.	13.50	120.00	
2 year, 10 to 15 in. B. & B.		160.00	
<i>P. Albert. conica glauca</i> (Dwarf Alberta Spruce)			
1 year small		80.00	
TSUGA (Hemlock)			
<i>T. Can. Sargentii</i> (Sargent Weeping)			
1 year, 12 to 15 in. B. & B.	12.50	105.00	

We have several other varieties available not listed on this page. Items marked B. & B. may be ordered for spring shipment. Where a "10" rate is given, orders will be accepted for 5 or more. Or we will accept trial orders for ten trees of five different kinds—two of each—at the same prices. Otherwise, 25 of a kind is a minimum order.

EVERGREENS IN THE SHADE



The Hemlock (*Tsuga canadensis*)

A glorious tree. Its soft drooping branches are quite similar to the famous Deodar Cedar of India, yet it is absolutely hardy. Requires protection from the wind. Makes a beautiful sheared hedge.

	(Each)	(10)
18 to 24 in.....	\$1.50	\$14.00
(\$120 per 100)		
2 to 2½ ft.....	2.50	24.00
(\$150 per 100)		
2½ to 3 ft.....	4.00	37.50
3 to 3½ ft.....	5.00	48.00
3½ to 4 ft.....	7.50	70.00

Taxus Capitata

The Japanese Upright Yew pictured at the right is a sample tree 15 to 18 inches high now ready to ship.

	(10)	(100)
15 to 18 in.....	\$17.00	\$135.00
18 to 24 in.....	20.00	160.00



BEAUTIFUL and useful evergreens can be grown in the absence of sunlight if care is taken in selecting the proper varieties. The best of all such types are the Hemlock and the Yew.

TAXUS—The Yew

Japanese Yew (*Taxus cuspidata*)

The most common form. A spreading bush, about twice as wide as high. Very hardy. Responds eagerly to shearing as for a hedge, although the upright form is better for this purpose. (*Taxus cusp. capitata*).

	(Each)	(10)	(100)
12 to 15 inches.....	\$2.50	\$24.00	\$225.00
18 to 24 inches.....	4.00	37.50	360.00
2 to 2½ feet.....	6.00	54.00	480.00
2½ to 3 feet.....	8.00	70.00

Dwarf Japanese Yew (*Taxus brevifolia* or *nana*)

Extremely slow growing and with denser, shorter needles than ordinary Japanese Yew. The one finest rock garden specimen—picturesque form.

	(Each)	(10)	(100)
12 to 15 inches.....	\$3.75	\$35.00
15 to 18 inches.....	4.50	42.00
18 to 24 inches.....	7.50

Improved Japanese Yew (*T. cuspidata intermedia*)

A cross between the Japanese and dwarf Japanese. We offer two forms, the type—*intermedia*—and an upright form—*columnaris*. Both are pictured below.

T. Cuspidata intermedia

	(Each)	(10)	(100)
12 to 15 in.....	\$2.50	\$24.00
15 to 18 in.....	3.50	32.50
18 to 24 in.....	5.00	48.00	450.00

T. Cuspidata columnaris

15 to 18 in.....	\$3.50	\$30.00
2 to 2½ ft.....	5.00	45.00	420.00
2½ to 3 ft.....	6.50	60.00	550.00
3½ to 4 ft.....	10.00	90.00

We have available many other kinds of Yew. Write for prices on special varieties.

THE JAPANESE YEW IN PICTURES

Dwarf Japanese Yew (*nana*)

Intermedia

Columnaris

Japanese Yew (*Cuspidata*)

Upright (*Capitata*)





Here are Nut Trees

WE suggest reforestation of waste lands with nut trees. Not for the sake of nut crops at all—as a matter of fact these ARE of considerable value—But consider nut trees from the point of view of lumber alone:

- Hickory**—very valuable special purpose wood.
- Walnut**—a slow crop, but very profitable.
- Beech**—A valuable special purpose wood.
- Oak**—Always in demand.
- Chestnut**—Durable, popular lumber.

Consider also the fact that while these trees are not very fast growing as compared with Elms and Maples, they are considerably faster growing than the fastest of the evergreen varieties now so commonly used for reforestation—Spruce, Pine, Fir, etc. Nut trees may be planted during October and November. Many hardy varieties are priced on these two pages. Special prices in large quantities.

Consider the value of nut trees for reforestation of waste land. They grow on soil too poor for evergreens. Although, aside from the pleasure and value of yearly crops of nuts, the wood is extremely valuable as timber—more so than any other class of tree that can be grown. Mass methods of production allow prices which make immediate forest planting practicable now—this Fall.

American Sweet Chestnut	(100)	(1000)
2 to 3 feet.....	\$18.00	\$160.00
Butternut (J. cinerea)		
2 to 3 feet.....	6.00	50.00
American Beech (Fagus)		
12 to 18 inches.....	4.00	20.00

Pin Oak (Quercus palustris)	(100)	(1000)
12 to 18 inches.....	9.00	65.00
Shagbark Hickory (H. ovata)		
6 to 12 inches.....	8.00	60.00
Hazlenut (Corylus)		
12 to 18 inches.....	4.00	25.00
Black Walnut (Juglans nigra)		
12 to 18 inches.....	4.00	30.00

NUT-TREE OFFER No. 1

Ten each of all the above varieties—70 trees—nursery-grown seedlings, 12 to 18 inches high, packed for shipment and postpaid..... **\$9.00**

NUT-TREE OFFER No. 2

Three each of all the above—21 trees—2 to 3 feet high, packed for shipment and postpaid..... **\$10.00**

DECIDUOUS TREE SEEDLINGS

THE following pages are devoted to “lining-out” stock—seedlings, (“S”) rooted cuttings (“RC”), grafts and transplants (“X”). Each “X” indicates one transplanting. This class of stock is all nursery grown and healthy, fully up to grade specified. Unless otherwise stated, we cannot sell less than 50 of one kind and size at these prices.

ACER dasycarpum MAPLE		
(Silver Maple)	(100)	(1000)
3 to 4 ft.....	5.00	25.00
Smaller grades on request.		

ACER rubrum (Red Maple)	(100)	(1000)
6 to 12 in.....	3.00	25.00
12 to 18 in.....	4.00	30.00
18 to 24 in.....	8.50	80.00

***ACER platanoides (Norway Maple)**
Perhaps the best all-around shade tree for streets.

5 to 6 ft. Whips.....	340.00
6 to 7 ft. Whips.....	450.00
7 to 8 ft. Whips.....	500.00
8 to 9 ft. Whips.....	625.00

SCHWEDLER'S PURPLE MAPLE

5 to 6 ft. Whips.....	870.00
6 to 7 ft. Whips.....	1075.00
7 to 8 ft. Whips.....	1350.00

NOTE: The above prices on Norway and Schwedler Maple include delivery charges to any freight station in U.S.A.

ACER saccharum (Sugar Maple)		
6 to 12 in.....	3.00	25.00
12 to 18 in.....	4.00	30.00
18 to 24 in.....	5.00	40.00

WEIR'S CUT-LEAF MAPLE		
3 to 4 ft. Whips.....	40.00	295.00
4 to 5 ft. Whips.....	45.00	350.00

Deciduous Trees (Continued)

AILANTHUS glandulosa (Tree of Heaven)	(100)	(1000)
18 to 24 in.	3.00	20.00
2 to 3 ft.	4.00	30.00
AESCULUS (Flowering Horse-Chestnut) <i>hippocastanum</i>		
6 to 10 in.	5.00	40.00
AESCULUS neglecta georgiana (Dwarf Red-Flowering Buckeye)		
Very rare shrub with red to yellow flowers.		
4 to 6 in. S	5.00	35.00
6 to 12 in. S	6.50	50.00

BIRCH

BETULA alba (White Birch)		
12 to 18 in.	12.00	90.00
BETULA populifolia (Gray Birch)		
12 to 18 in.	3.00	25.00
2 to 3 ft.	4.00	35.00
BETULA papyrifera (Paper Birch)		
8 to 12 in.	4.00	30.00
12 to 18 in.	6.00	40.00
BETULA lenta (Sweet Birch)		
12 to 18 in.	3.00	17.50
2 to 3 ft.	4.00	25.00
BETULA lutea (Yellow Birch)		
8 to 12 in.	3.50	25.00
12 to 18 in.	4.00	36.00
BETULA nigra (River Birch)		
12 to 18 in.	2.50	20.00
18 to 24 in.	3.50	25.00
CATALPA speciosa (Western Catalpa)		
18 to 24 in.	2.00	15.00
Other grades on request.		
CARPINUS americana (Hornbeam)		
6 to 12 in.	4.00	20.00
12 to 18 in.	5.00	25.00
18 to 24 in.	6.00	35.00
CASTANEA dentata (American Chestnut)		
2 to 3 ft.	18.00	160.00
CERCIS canadensis (Red Bud)		
6 to 12 in.	2.50	14.00
12 to 18 in.	4.00	20.00
18 to 24 in.	5.50	30.00
2 to 3 ft.	7.00	40.00
*CORNUS FLORIDA (Flowering Dogwood)		
18 to 20 in. S	10.00	50.00
18 to 24 in. X	30.00	275.00

BEECH

FAGUS ferruginea (American Beech)		
6 to 12 in.	3.00	15.00
12 to 18 in.	4.00	20.00
18 to 24 in.	6.00	30.00
FAGUS sylvatica (European Beech)		
8 to 12 in.	6.00	50.00
12 to 18 in.	10.00	80.00
FRAXINUS (American White Ash)		
2 to 3 ft. X	6.00	40.00
GINGKO BILOBA (Maidenhair)		
Prices on request.		
GLEDITSCHIA (Honey Locust)		
6 to 12 in.	2.00	10.00
12 to 18 in.	2.50	15.00
18 to 24 in.	4.00	20.00
HICORIA alba (Shellbark Hickory)		
6 to 12 in.	8.00	60.00
HICORIA ovata (Shagbark Hickory)		
4 to 6 in.	5.00	40.00
6 to 12 in.	8.00	60.00
JUGLANS nigra (Black Walnut)		
12 to 18 in.	4.00	30.00
2 to 3 ft.	6.00	50.00
JUGLANS cinera (Butternut)		
2 to 3 ft.	6.00	50.00
3 to 4 ft.	8.00	70.00
LIQUIDAMBAR (Sweet Gum)		
12 to 18 in.	5.00	28.00
18 to 24 in.	6.00	40.00
LIRIODENDRON (Tulip Poplar)		
12 to 18 in.	2.00	15.00
18 to 24 in.	3.00	18.00
2 to 3 ft. S	4.00	25.00
3 to 4 ft.	6.00	40.00

MAGNOLIA <i>M. acuminata (Cucumber Tree)</i>	(100)	(1000)
4 to 6 in.	8.00	60.00

MORUS alba (Russian Mulberry)		
Attractive to birds. Among others, the Grouse, Quail, Lark, Loon, Thrush, Tanager, etc.		
2 to 3 ft.	3.00	16.00
3 to 4 ft.	4.50	25.00
Other sizes on request.		

PLATANUS occidentalis (Sycamore)		
12 to 18 in.	2.50	12.00
18 to 24 in.	3.50	18.00
2 to 3 ft.	5.00	25.00

*PLATANUS orientalis		
18 to 24 in.	6.50	50.00
2 to 3 ft.	8.00	60.00
3 to 4 ft.	10.00	80.00

POPULUS (Poplar)		
Lombardy and Simon's Poplars		
18 to 24 in. whips	2.50	14.00
3 to 4 ft. whips	5.00	25.00
Carolina and Norway Poplars		
2 to 3 ft. whips	5.00	30.00

OSAGE ORANGE		
12 to 18 in.	2.00	10.00
18 to 24 in.	3.00	15.00

OAK

QUERCUS alba (White Oak)		
6 to 12 in.	5.00	40.00
12 to 18 in.	7.00	60.00

QUERCUS coccinea (Scarlet Oak)		
6 to 9 in.	6.00	40.00

*QUERCUS palustris (Pin Oak)		
6 to 9 in. X	7.00	60.00
9 to 12 in. X	6.50	55.00
12 to 18 in. X	9.00	65.00
18 to 24 in. X	10.00	75.00

*QUERCUS rubra (Red Oak)		
6 to 12 in.	7.00	60.00
12 to 18 in.	9.00	80.00

QUERCUS macracarpa (Burr Oak)		
Prices on request.		

QUERCUS Robur (English Oak)		
Prices on request.		

ROBINIA (Black Locust)		
12 to 18 in.	2.00	12.50
2 to 3 ft.	3.00	25.00
Other sizes on request.		

SALIX babylonica (Weeping Willow)		
2 to 3 ft.	6.00	40.00
3 to 4 ft.	8.00	45.00

SORBUS aucuparia (European Mt. Ash)		
12 to 18 in.	6.00	50.00
18 to 24 in.	8.00	60.00

TILIA americana (American Linden)		
9 to 12 in.	4.00	25.00

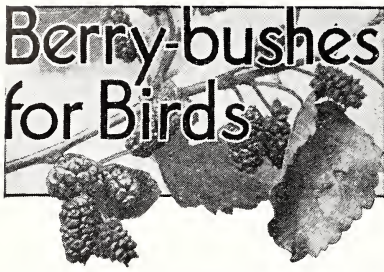
ELM

ULMUS americana (American Elm)		
12 to 18 in.	2.00	10.00
18 to 24 in.	3.50	20.00
3 to 4 ft. S	4.50	30.00
Other sizes on request.		

*ULMUS pumila (Chinese Elm)		
A new variety, comparatively that has been attracting so much attention in all parts of the country.		
12 to 18 in.	5.00	36.00
18 to 24 in.	7.00	50.00
2 to 3 ft.	9.00	70.00
3 to 4 ft. Whips	12.00	100.00
4 to 5 ft. Whips	16.00	150.00

4 to 5 ft. X Branched	425.00
5 to 6 ft. X Branched	580.00

NOTE: Last two prices include delivery to any freight station in U.S.A.



LESS fruitless talk about "feathered friends" and more sanctuaries—that is what is needed if we are to preserve and increase our treasures of bird life. A group of shrubs bearing attractive fruits and berries is the surest way to bring the birds to your home grounds. We have selected five kinds of shrubs and trees that seem to be best adapted. Plant some this autumn. The best time is during October and November.

More detailed information gladly furnished.

BIRD-FOOD OFFER No. 1	
Ten each of the above five kinds—50 nursery-grown seedlings, 12 to 18 inches high, packed and shipped, postpaid for	\$8.00

BIRD-FOOD OFFER No. 2	
Three each of the above five kinds—15 transplanted shrubs and trees, 2 to 3 feet high, packed and shipped, postpaid, for.....	\$8.00

Japanese Barberry	(100)	(1000)
12 to 15 inches.....	\$ 6.00	\$30.00
Flowering Dogwood		
18 to 20 inches.....	10.00	50.00
American High-bush Cranberry		
12 to 18 inches.....	10.00	90.00
Spice-bush (Benzoin)		
12 to 18 inches.....	5.00	40.00
Russian Mulberry		
2 to 3 feet.....	3.00	16.00

DECIDUOUS SHRUBS FOR LINING-OUT

ALTHEA (Rose of Sharon)		
Double flowering named varieties, Red, White, Purple. Blooms in August.	(100)	(1000)
12 to 18 in.....	6.00	45.00
18 to 24 in.....	8.00	60.00
AMORPHA fruticosa (Indigobush)		
18 to 24 in.....	4.00	25.00
ARONIA		
melancarpa (Black Chokeberry)		
12 to 18 in.....	6.00	40.00

BARBERRY HEDGE		
15-18 in., 3 yr. heavy.....	(100) \$12.00	(1000) \$100.00

BARBERRY		
B. Thunbergii	(100)	(1000)
6 to 12 in.....	3.50	16.00
12 to 15 in.....	6.00	30.00
18 to 24 in. X.....	15.00	140.00
Red Leaf Japanese (new)		
2 in. pots.....	15.00	130.00
12 to 15 in.....	45.00	400.00
B. Thunbergii minor (Box Barberry)		
4 to 6 in. X.....	10.00	90.00
6 to 8 in. X.....	12.00	100.00
BENZOIN aestivale (Spice-bush)		
12 to 18 in.....	5.00	40.00
BUDDLEIA magnifica (Butterfly Bush)		
12 to 18 in.....	10.00	90.00
B. alternifolia (new hardy variety)		
12 to 18 in.....	10.00	80.00
CHIONANTHUS virginica (White Fringe)		
6 to 8 in.....	16.00	125.00
CORNUS (Dogwood)		
C. alba (Sibirica) Blood-Red branches		
12 to 18 in.....	5.50	25.00
C. stolonifera. Red Osier Dogwood		
12 to 18 in.....	3.00	16.00
CORYLUS americana (Hazlenut)		
12 to 18 in.....	4.00	25.00
CYDONIA japonica (Jap. Quince)		
12 to 18 in.....	8.00	40.00

*CRATAEGUS (Hawthorne)		
C. coccinea	(100)	(1000)
12 to 18 in.....	9.00	60.00
C. oxycantha (English Hawthorne)		
6 to 12 in.....	5.00	40.00
12 to 18 in.....	9.00	60.00
DEUTZIA		
Candidissima, crenata, fortunei, Pride of Rochester		
12 to 18 in.....	5.00	30.00
18 to 24 in.....	6.00	40.00
D. Lemoine and Gracilis		
8 to 12 in.....	9.00	50.00
EUONYMUS alatus (Winged Euonymus)		
6 to 12 in.....	13.00	100.00
FORSYTHIA		
Fortunei, intermedia, suspensa, viridissima		
12 to 18 in.....	9.00	70.00
Spectabilis (New Variety)		
15 to 18 in.....	9.00	50.00
HYDRANGEA		
Paniculata grandiflora		
10 to 12 in.....	8.00	50.00
aborescens grandiflora		
12 to 15 in.....	8.00	60.00
aborescens		
12 to 18 in.....	6.00	40.00
*KOLKWITZIA amabilis (Beauty Bush)		
6 to 9 in. X.....	24.00
9 to 12 in. X.....	40.00
LONICERA (Honeysuckle)		
Bella albidia, fragrantissima, morrowii, tartarica alba and rubra		
6 to 12 in.....	4.00	30.00
18 to 24 in.....	8.00	60.00
PHILADELPHUS		
Coronarius, Mt. Blanc. Nivalis, Lemoine		
12 to 18 in.....	6.00	40.00
Virginal. New and scarce variety		
12 to 15 in.....	10.00	70.00
RHUS (Sumac)		
R. copalina (Shining Sumac)		
R. glabra (Smooth Sumac).		
12 to 18 in.....	3.00	20.00
18 to 24 in.....	4.00	30.00
R. typhina (Staghorn Sumac)		
18 to 24 in.....	5.00	25.00

DECIDUOUS SHRUBS (Continued)

ROSES

Blanda, Meadow Rose	(100)	(1000)
10 to 15 in.....	6.00	40.00
Carolina (Humilis)		
6 to 12 in.....	6.00	40.00
Lucida, Virginia Rose		
12 to 15 in.....	6.00	35.00
Lucida alba		
12 to 15 in.....	10.00	80.00
Multiflora, Japanese Rose		
10 to 18 in.....	4.00	25.00
Hugonis		
8 to 12 in.....	7.00	60.00
Rugosa rubra		
8 to 15 in.....	6.00	40.00
Setigera, Prairie Rose		
12 to 15 in.....	6.00	40.00
Wichuriana, Memorial Rose		
12 to 18 in.....	5.00	25.00

Climbing Roses; Dorothy Perkins, White Perkins, Crimson Rambler, Dr. Van Fleet, Clb. Amer. Beauty, Tausendschoen, Silver Moon, Paul Scarlet.

2 1/4 in. pots..... 15.00 125.00

We will be glad to quote on Climbing Tea, Hybrid Tea, Hybrid Perpetuals, Polyantha, etc., in any variety that you may wish.

SPIREA

Anthony Waterer		
6 to 12 in. X.....	12.00	100.00
Billardi		
12 to 18 in.....	6.50	55.00
Thunbergieri		
8 to 12 in.....	8.00	60.00
Trichocarpa (New)		
12 to 18 in.....	10.00	90.00
Van Houtte		
12 to 18 in.....	6.00	30.00
18 to 24 in.....	7.00	40.00

STEPHANANDRA (Lace Bush)

S. flexuosa	(100)	(1000)
6 to 12 in.....	10.00	70.00

SYMPHORICARPUS

Racemosus (Snowberry)		
12 to 18 in.....	6.00	30.00
Vulgaris (Coralberry)		
12 to 18 in.....	5.00	35.00

SYRINGA (Lilac)

vulgaris, Common purple lilac		
12 to 18 in.....	6.00	50.00
vulgaris alba		
12 to 18 in.....	6.00	50.00
Persian Lilac (purple)		
12 to 18 in.....	12.00	60.00

TAMARIX africana

10 to 15 in.....	8.00	40.00
------------------	------	-------

VIBURNUM

Americanum, Amer. High Bush		
Cranberry		
6 to 8 in.....	8.00	60.00
12 to 18 in.....	10.00	90.00
Carlessii		
Strong grafts, 8 to 12 in.....	70.00	650.00
Dentatum (Arrow Wood)		
12 to 18 in.....	6.00	50.00
Cassinoides (Withered)		
8 to 15 in.....	12.00	80.00
Lantana (Wayfaring Tree)		
12 to 18 in.....	9.00	70.00
Opulus sterilis (Common Snowball)		
8 to 12 in.....	10.00	90.00
Tomentosum (Jap. Snowball)		
18 to 24 in.....	10.00	90.00

WEIGELIA

Rosea		
12 to 18 in.....	6.00	30.00
Eva Rathke (best red variety)		
8 to 12 in.....	14.00	100.00

SAMPLE OFFER OF FLOWERING SHRUBS

TEST the quality of the stock offered above. We will send you fifty shrubs 12 to 18 inches in height, thrifty and well grown—not specimens, of course, but designed to grow into specimens in a year or two; packed and postage paid for:—

These five kinds only }
 10 Spiraea Van Houtteii
 10 Deutzia Pride of Rochester
 10 Forsythia fortunei
 10 Weigelia rosea
 10 Philadelphus coronarius

\$7.00

OR: Three each of these five varieties in larger sizes—2 to 3 feet—for the same price. Fifteen shrubs ready to flower.

PLANT ROSES IN THE FALL

GENERAL agreement upon planting Roses is—that better results are achieved by October or November planting rather than waiting until Spring. This has been endorsed by the American Rose Society and many other experts.

OUR DOZEN HYBRID TEAS

Special offer postage paid.

All plants are field-grown, 2-year old number one.

\$7.50

The list of varieties has been chosen with a great deal of care. The best of the new types are included with the best of the old.

Talisman—sensational color scheme of tea-yellow outside and rose inside.

Souv. de Georges Pernet—Shimmering pink, with yellow at base of petals.

Red Flowers
 Red Radiance
 Etoile de France
Pink Flowers
 Briarcliff
 Mme. Edouard Herriot
 Madame Butterfly
 Lady Ashtown

Yellow Flowers
 Mrs. Aaron Ward
 Souv. de Claudius Pernet

White Flowers
 Kaisarin A. Victoria
 White Killarney

NEW DAWN

AN EVERBLOOMING CLIMBING VINE

A miracle has happened to the Van Fleet Climbing Rose—already famous as the best of the hardy climbers. Vigorous, free from disease, producing fragrant shell pink flowers in abundance, equal in size and shape to many ordinary bush roses—but, like all climbers, blooming only in June.

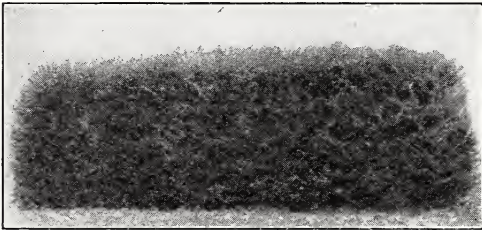
And now the miracle!—A sport from this variety that blooms like a hybrid tea—all summer long! This rose is patented and our supply comes from authorized sources. The greatest boon to gardens in years! Absolutely hardy.

2-year budded, field grown

\$4.50 for 2, postpaid
\$10.50 for 5, postpaid

EVERGREEN HEDGES

WHEN winter winds blow, how much protection does your Privet hedge give, bare of leaves? Evergreen hedges are of permanent beauty. They can be obtained in many textures and colors—in various heights and widths. But the little-understood factor is that they need not be expensive. Kelsey Nursery Service offers evergreens in a special hedge size. They are economically grown for a special purpose. Unless otherwise stated, they are shipped without a ball of earth (B. & B.) the roots being instead wrapped in damp moss and shipped by express. More and more every year this method on small sizes is proving to be a sound one. Less than ten percent loss may be expected—and the cost is so enormously less than shipping the roots in earth, that this loss is nothing. Even shipped with balled roots evergreens normally show some loss. The method is not recommended for trees of larger size.



A HEDGE OF UPRIGHT YEW

Taxus cuspidata if raised from seed and not from cuttings makes, according to the late Dr. Wilson of the Arnold Arboretum, the best evergreen hedge for permanent use. It is absolutely hardy and densely branched. This has hitherto been expensive. But look at these prices:—

15 to 18 inches B. & B.....	\$135.00	\$1200.00
18 to 24 inches.....	160.00

A HEMLOCK HEDGE

If soft, dense-textured green is desired, Hemlock makes a beautiful hedge. To see one is to remember it always.

American Hemlock

10 to 12 in. XXX.....	35.00	300.00
12 to 15 in. XXX.....	45.00	400.00

CEDAR (Cedrus)

Cedar of Lebanon

18 to 24 in. XXX.....	50.00	395.00
-----------------------	-------	--------

LARCH (Larix)

European Larch

24 to 36 in. XXX.....	20.00	150.00
-----------------------	-------	--------

A PINE HEDGE

For exposed, windy locations. It makes a dense wind-break and may be sheared into form with satisfactory results.

Austrian Pine

18 to 24 in. XX.....	32.00	250.00
----------------------	-------	--------

Mugho Pine

10 to 12 in. XXX Bushy.....	25.00	200.00
-----------------------------	-------	--------

Riga Scots Pine

18 to 30 in. XX.....	12.00	90.00
----------------------	-------	-------

Umbrella Pine (*Sciadopitys verticillata*)

8 to 10 in. XX.....	50.00	450.00
---------------------	-------	--------

FIR (Abies)

Balsam Fir	(100)	(1000)
10 to 16 in. XX.....	\$17.50	\$140.00

Concolor Fir

10 to 12 in. XX.....	25.00	200.00
12 to 14 in. XXX.....	30.00	250.00
14 to 18 in. XXX.....	35.00	300.00

Douglas Fir

8 to 10 in. XX.....	20.00	160.00
10 to 12 in. XX.....	24.00	200.00
2 to 2½ ft. XX.....	30.00	260.00

SPRUCE (Picea)

White Spruce

10 to 15 in. XXX.....	12.50	100.00
-----------------------	-------	--------

Englemann Spruce

9 to 12 in. X.....	25.00	200.00
12 to 16 in. X.....	37.50	300.00

Colorado Spruce

10 to 12 in. XX.....	25.00	200.00
----------------------	-------	--------

(The above two Spruces are both "blue spruces". The color actually runs from light green to blue — perhaps 30% or more blue.)

Polar Spruce (Borealis)

12 to 18 in.....	17.00	150.00
------------------	-------	--------

Norway Spruce

12 to 18 in.....	12.50	100.00
------------------	-------	--------

RED PINE

(*P. resinosa*)

This excellent native species is among the fastest growing evergreens and seems remarkably disease-resisting. Ideal for hedges and screens where strong winds sweep the site and few other varieties would be hardy enough to stand the exposure. At the left is a photograph taken August 1, 1931 of one of the actual trees here offered and at the following low prices:



	(100)	(1000)
18 to 30 in. XX.....	\$22.00	\$160.00

Evergreen Seedlings and Transplants

EVERYWHERE—in all walks of life—are men with vision. They are working and planning for conservation of our fast-diminishing forests. Incidentally they are enjoying, if they are wise, one of the most fascinating hobbies possible to an American. The thrill of watching a few hundred or thousand baby evergreens grow into a forest or, if you prefer, into splendid specimens for your estate, increases with the years. The value to the country is beyond estimating. All the small trees here offered are healthy and nursery grown from selected seed.

"S" Indicates seedlings not transplanted.
 "X" Indicates each transplanting.

ABIES (Fir)

FIR

Balsamea (Balsam Fir)

Its characteristic clean odor and stately appearance make this a desirable variety even without its well known value as timber. Ideal evergreen for wet land. Popular variety for Christmas trees. (100) (1000)

4 to 6 in. X.....	\$ 3.50	\$ 25.00
6 to 12 in. X.....	5.00	35.00
5 to 10 in. XX.....	6.50	40.00
10 to 16 in. XX.....	17.50	140.00
brachyphilla (Nikko Fir)		
3 to 4 in. S.....	8.00	60.00
8 to 10 in. XX.....	16.00	140.00

concolor (White Fir)

Dense silver blue foliage. Finest Fir for ornamental effect.

2 yr. S.....	\$ 4.00	\$ 20.00
3 to 5 in. X.....	6.25	50.00
6 to 8 in. X.....	10.00	80.00
8 to 10 in. XX.....	20.00	170.00
10 to 12 in. XX Bushy.....	25.00	200.00
12 to 14 in. XXX Bushy.....	30.00	250.00
14 to 18 in. XXX Bushy.....	35.00	300.00

THE DOUGLAS FIR (Pseudotsuga taxifolia)

One of the most beautiful conifers, yet easy to grow and valuable also for timber and as a Christmas tree.

2 year S.....	\$ 2.40	\$ 12.00
2 to 5 in. X.....	3.00	16.00
4 to 8 in. X.....	4.00	20.00
6 to 12 in. X.....	8.00	40.00
6 to 8 in. XX.....	12.00	100.00
10 to 12 in. XX.....	24.00	200.00

Nordmanni (Nordmann's Fir)

4 to 6 in. X.....	15.00	140.00
-------------------	-------	--------

firma (Momi Fir)

3 to 4 in. X.....	10.00	80.00
2 yr. S.....	6.00	40.00

Mariesii (Maries Fir)

5 to 7 in. XX.....	20.00	175.00
--------------------	-------	--------

pectinata (Silver Fir)

2 year S. 3 to 4 in.....	9.00	80.00
--------------------------	------	-------

veitchi (Veitch's Fir)

3 yr. S.....	6.00	40.00
8 to 10 in. X.....	10.00	90.00

JUNIPER

JUNIPERUS (Junipers)

Communis depressa (Common Prostrate Juniper) (100) (1000)

6 to 8 in., 3 yr. S.....	6.00	40.00
8 to 10 in. XX.....	30.00	275.00

Communis depressa plumosa

6 to 8 in. X.....	15.00	135.00
-------------------	-------	--------

Communis depressa aurea (Douglas Golden)

4 to 6 in. X.....	15.00	135.00
-------------------	-------	--------

Communis hibernica (Irish Juniper)

6 to 8 in. X.....	15.00	135.00
-------------------	-------	--------

Horizontalis douglasii (Waukegan Juniper)

4 to 7 in. Rooted Cuttings.....	9.00	80.00
---------------------------------	------	-------

Horizontalis douglasii (Waukegan Juniper)

4 to 7 in. Rooted Cuttings.....	17.50	160.00
7 to 9 in. X.....	31.00	295.00

Excelsa stricta (Spiny Greek Juniper)

4 to 6 in. X.....	20.00	160.00
6 to 8 in. X.....	30.00	260.00

Chinensis Pfitzeriana (Pfitzer's Juniper)

Probably the finest of the ornamental Junipers. Feathery greenish-blue foliage. (100) (1000)

4 to 6 in. X.....	16.00	150.00
6 to 8 in. X.....	25.00	235.00
8 to 10 in. X.....	30.00	275.00

Sabina (Savin Juniper)

4 to 7 in. Rooted Cuttings.....	11.00	100.00
7 to 9 in. X.....	30.00	295.00

Virginiana (Red Cedar)

4 to 6 in. X.....	8.00	70.00
6 to 12 in. X.....	10.00	80.00
12 to 18 in. X.....	12.00	95.00

LARIX (Larch)

European Larch (Europa)

8 to 14 in. X.....	8.00	50.00
16 to 24 in. X.....	10.00	70.00
24 to 36 in. XXX.....	20.00	150.00

American (Hackmatack)

Prices on request.

Japanese Larch (Leptolepis)

6 to 10 in. S.....	3.00	15.00
8 to 12 in. X.....	10.00	50.00

Siberian Larch (Siberica)

5 to 10 in. X.....	5.00	40.00
--------------------	------	-------

PICEA (Spruce) SPRUCE

alba (White Spruce)

Most suitable for paper pulp and succeeds wherever Norway Spruce succeeds. It is a trifle quicker in growth. Popular variety for Christmas trees.

2 or 3 year S.....	1.00	6.00
4 to 8 in. X.....	3.00	16.00
5 to 10 in. X.....	4.00	20.00
10 to 15 in. XXX.....	12.50	100.00
8 to 12 in. XXX.....	10.00	80.00

canadensis (Black Hills Spruce)

2 yr. S.....	4.00	25.00
4 to 7 in. X.....	10.00	80.00

englemanni (Englemann's Blue)

One of the finest of the Spruces, foliage very dense and ranges from a bluish green to steel blue in color.

2 yr. S.....	1.50	12.00
3 to 6 in. X.....	5.00	40.00
9 to 12 in. X.....	25.00	200.00
12 to 16 in. X.....	37.50	300.00

NORWAY SPRUCE

(Picea excelsa)

This variety will thrive in dense shade and succeeds in heavy damp soil. Having a flat root system, it is suitable for shallow, rocky soils. The hardiest spruce. Popular for Christmas trees.

3 yr. S.....	\$ 1.00	\$ 6.00
3 to 5 in. X.....	2.00	12.00
4 to 8 in. X.....	3.00	16.00
8 to 12 in. X.....	4.50	22.50
10 to 15 in. XX.....	7.50	50.00
12 to 20 in. X.....	9.00	60.00
12 to 18 in. XX.....	12.50	100.00

polita (Tigertail Spruce)

4 to 6 in. X.....	10.00	80.00
-------------------	-------	-------

pungens (Colorado Blue Spruce)

This variety varies in color from light blue to light green. Unless stated "Selected Blue" our stock runs from 30 to 50% blue. In small sizes, it is usually cheaper to buy selected trees. Even seed from the Koster blue Spruce does not make all blue seedlings.

3 yr. S.....	3.00	12.00
3 to 5 in. X.....	3.75	30.00
5 to 9 in. X.....	7.50	60.00
6 to 8 in. XX.....	15.00	100.00
10 to 12 in. XX.....	25.00	200.00

NOT LESS THAN 50 OF ONE VARIETY AND SIZE CAN BE SHIPPED FROM THESE LAST PAGES.—250 or more take the 1,000 rate.

Evergreen Seedlings and Transplants

Borealis (Polar Spruce)	(100)	(1000)
3 to 5 in. S.....	3.00	25.00
6 to 9 in. XX.....	11.00	90.00
9 to 12 in. XX.....	14.00	120.00
12 to 18 in. XX.....	17.00	150.00
Koyamai Spruce		
5 to 7 in. X.....	12.00	95.00
Oriental Spruce		
2 to 3 in. X.....	12.00	90.00
Sitka Spruce		
2 yr. S.....	5.00	40.00
rubra (Red Spruce)		
3 yr. S.....	1.20	6.00
3 to 6 in. X.....	3.00	16.00

PINE

PINUS (Pine)		
banksiana (Jack Pine)		
6 to 10 in. S.....	2.00	12.00
10 to 18 in. X.....	6.00	30.00
densiflora (Jap. Red Pine)		
Lighter foliage and more spreading than the American Pine, but also thrives in sea shore planting. Understock for grafting Jap. Table Pine.		
8 to 10 in. S.....	3.00	16.00
8 to 10 in. X.....	4.00	24.00
mughus (Mugho Pine)		
2 yr. S.....	3.00	12.00
3 to 5 in. X.....	4.00	30.00
4 to 6 in. X.....	8.00	60.00
5 to 10 in. X.....	10.00	50.00
6 to 8 in. XX.....	15.00	120.00
8 to 10 in. XX.....	18.00	160.00
10 to 12 in. XXX Bushy.....	25.00	200.00

NIGRA—

THE AUSTRIAN PINE

This variety of the Black pine is perhaps the best of the hardy, fast growing kinds and succeeds in a wide variety of soil—even along beaches subject to the salt spray of the sea. It is much used as a wind break in estates near the ocean, but is equally adapted for forestry planting.

3 to 6 in. S.....	\$ 2.50	\$ 12.00
5 to 8 in. X.....	4.00	30.00
6 to 10 in. X.....	5.00	40.00
10 to 16 in. X.....	15.00	120.00
18 to 24 in. XX.....	32.00	250.00

ponderosa (Western Yellow Pine)
Prices on request.

RESINOSA—THE RED (NORWAY) PINE

This is probably the one most popular evergreen for all purposes. It is a native to the Eastern parts of the country and absolutely hardy. This variety is notable because of its freedom from most insect pests.

3 yr. S. 3 to 5 in.....	\$ 1.50	\$ 6.00
3 to 5 in. X.....	2.50	12.00
8 to 12 in. X.....	5.00	30.00
18 to 32 in. XX (Heavy).....	22.00	160.00

rigida (Pitch Pine)		
5 to 8 in. S.....	2.40	12.00
4 to 6 in. X.....	3.20	16.00
strobis (White Pine)		
New York State only.		
8 to 18 in. X.....	6.00	30.00
New England States only.		
12 to 18 in. X.....	4.00	30.00
18 to 24 in. X.....	5.00	40.00
Pennsylvania only.		
2 yr. S. 3 to 6 in.....	2.00	12.00
5 to 10 in. X.....	10.00	32.00
Ship into almost all States. Prices on request.		
sylvestris (Scotch Pine)		
The variety par excellence for poor soils—even dry sand wastes can be successfully covered with Scotch Pine.		
12 to 18 in. X.....	6.00	40.00
18 to 24 in. X.....	7.00	50.00

RIGA SCOTCH PINE (Pinus sylvestris var. Rigensis)

This has long been known among foresters as a type altogether superior to ordinary Scots Pine. Where the type grows straggly and with a crooked leader, the Riga variety puts up a straight clean trunk.

2 or 3 yr. S.....	\$ 1.00	\$ 6.00
6 to 12 in. X.....	3.00	16.00
12 to 18 in. X.....	6.25	50.00
18 to 24 in. X.....	9.00	70.00
18 to 24 in. XX.....	12.00	90.00

thunbergii (Jap. Black Pine)		
12 to 18 in. X (Light).....	10.00	80.00
12 to 18 in. X.....	20.00	150.00

PSEUDOTSUGA

(See Abies)

RETINOSPORA

(Japanese Cypress)

	(100)	(1000)
filifera		
4 to 6 in. X.....	12.00	110.00
6 to 8 in. X.....	15.00	140.00
filifera aurea		
4 to 6 in. X.....	15.00	135.00
6 to 8 in. X.....	25.00	225.00
pisifera		
6 to 8 in. X.....	14.00	75.00
8 to 10 in. X.....	15.00	100.00
pisifera aurea		
6 to 8 in. X.....	16.00	145.00
8 to 10 in. X.....	22.00	200.00
plumosa		
4 to 6 in. X.....	10.00	90.00
6 to 8 in. X.....	14.00	120.00
10 to 12 in. X.....	25.00	225.00
12 to 15 in. XX.....	30.00	290.00
plumosa aurea		
4 to 6 in. X.....	10.00	95.00
6 to 8 in. X.....	15.00	130.00
8 to 10 in. X.....	20.00	180.00
12 to 15 in. X.....	30.00	275.00
squarrosa veitchii		
4 to 6 in. X.....	12.00	110.00
6 to 8 in. X.....	16.00	145.00
9 to 12 in. X.....	30.00	250.00
obtusa		
6 to 8 in. X.....	12.00	60.00

CEDRUS (True Cedar)

atlantica (Atlas Cedar)

Prices on request.

deodora (Deodar)

Prices on request.

libani (Cedar of Lebanon)

6 to 8 in. X.....	10.00	95.00
18 to 24 in. XXX.....	50.00	395.00

CRYPTOMERIA (Japanese Cedar)

japonica

3 to 5 in. S.....	7.00	60.00
-------------------	------	-------

CUPRESSUS (True Cypress)

lawsoniana (Lawson's Cypress)

5 to 7 in. X.....	5.50	45.00
6 to 9 in. X.....	8.00	60.00
9 to 12 in. X.....	11.00	90.00



Sciadopitys 8 to 10 in. XX Taxus cuspidata upright
—photo Aug. 3, 1931 6 to 8 in. from pots

These are the actual trees we offer

SCIADOPITYS verticillata (Umbrella Pine)

2 yr. S.....	\$ 8.00	\$ 60.00
1 to 2 in. X, 3 yr.....	12.00	100.00
2 to 3 in. X.....	20.00	180.00
5 to 8 in. XX.....	40.00	350.00
8 to 10 in. XX.....	50.00	450.00

For the first time we are able to offer this rare evergreen tree in quantity, and at low prices.

EVERGREENS (Continued)

ARBORVITAE

THUJA (Arborvitae) occidentalis (White Cedar)

	(100)	(1000)
3 yr. S.....	2.00	6.00
3 to 6 in. X.....	3.50	16.00
4 to 8 in. X.....	4.00	30.00
8 to 12 in. X.....	7.50	60.00
12 to 18 in. XX.....	20.00	120.00

pyramidalis

Rooted cuttings.....	\$ 8.00	\$ 70.00
6 to 9 in. X.....	17.00	108.00
8 to 12 in. X.....	25.00	200.00
10 to 12 in. X.....	26.00	240.00
10 to 12 in. XX.....	28.00	260.00
12 to 15 in. XX.....	40.00	360.00

BEST ARBORVITAE HEDGE

Occ. globosa (Globe Arborvitae)		
4 to 6 in. X.....	12.00	108.00
6 to 8 in. X.....	16.00	125.00
Occ. Reidii		
4 to 6 in. X.....	12.00	108.00
6 to 8 in. X.....	16.00	145.00
Occ. lutea (Geo. Peabody Arborvitae)		
Fine golden variety.		
4 to 6 in. X.....	20.00	180.00
6 to 8 in. X.....	30.00	270.00
Occ. verwaeneana		
6 to 8 in. X.....	25.00	225.00
Occ. douglasii aurea (Douglas Golden)		
4 to 7 in. Rooted cuttings.....	15.00	140.00
8 to 10 in. XX.....	30.00	280.00
Occ. ellwangeriana (Tom Thumb)		
4 to 6 in. X.....	12.00	108.00
6 to 8 in. X.....	15.00	135.00

TAXUS (Yew) YEW

Canadensis (Canadian Yew)	(100)	(1000)
Rooted cuttings.....	10.00	90.00
7 to 9 in. X.....	21.00	200.00

Cuspidata (Japanese Yew)

6 to 8 in. Strong one year rooted cuttings from 2½ in. pots.....	\$ 20.00	\$200.00
Cuspidata brevifolia (nana) (Dwarf Jap. Yew)		
6 to 8 in. Strong one year rooted cuttings from 2½ in. pots.....	24.00	240.00
cuspidata capitata (Upright Jap. Yew)		
6 to 8 in. Strong plants grown from seed and well established in 2½ in. pots for one year.....	25.00	250.00
4 to 6 in., 2 yr. S.....	8.00	70.00

cuspidata aurea (Golden)

8 to 10 in. XX.....	40.00	300.00
media Hicksii		
6 to 8 in. from 2½ in. pots.....	30.00	-----
8 to 10 in. X.....	40.00	-----
baccata (English Yew)		
6 to 8 in. X.....	16.00	145.00
8 to 10 in. X.....	25.00	235.00
baccata rependens (Weeping variety)		
4 to 6 in. X.....	25.00	235.00
baccata aurea (Golden)		
6 to 8 in. X.....	25.00	225.00
Washingtonii		
4 to 6 in. X.....	35.00	300.00

HEMLOCK

TSUGA CAROLINA (Carolina Hemlock)

8 to 12 in. XX.....	50.00	300.00
6 to 8 in. XX.....	40.00	250.00

HEMLOCK (Tsuga canadensis)

A splendid native tree, excellent as a specimen or for a hedge. Will thrive in shade, but will not stand windy exposure.

Lining-out sizes

4 to 6 in. S.....	\$ 4.00	\$ 20.00
6 to 12 in. X.....	12.00	100.00
8 to 18 in. X.....	25.00	160.00
10 to 12 in. XX Bushy.....	35.00	300.00
12 to 15 in. XX Bushy.....	45.00	400.00

EVERGREEN SHRUBS IN SMALL SIZES

ABELIA grandiflora

	(100)	(1000)
6 to 12 in. X.....	11.00	108.00
12 to 15 in. X.....	18.00	175.00

AZALEA

Kaempferi, N. E.		
4 to 6 in. S.....	14.00	120.00
6 to 8 in. X.....	30.00	240.00
Schlippenbachii, N. E.		
6 to 9 in. S.....	16.00	120.00
Mollis, N. E.		
6 to 8 in. X.....	20.00	200.00
Nudiflora, N. E.		
12 to 18 in. strong coll. clumps.....	10.00	80.00
Viscosa, N. E.		
6 to 12 in.....	18.00	160.00
Calendulacea, N. E.		
6 to 12 in.....	18.00	160.00

Limit of Hardiness of above listed Azaleas

N. E.—New England.
N. J.—N. J. and Southern N. Y.
PA.—Philadelphia, So. Pa. & N. J.

BUXUS (Boxwood)

B. suffruticosa, (Box edging)		
3 to 4 in. X.....	10.00	90.00
4 to 6 in. X.....	12.00	100.00
B. sempervirens (True Bush Box)		
4 to 6 in. X.....	12.00	100.00
6 to 8 in. X.....	15.00	120.00

COTONEASTER

Horizontalis		
2½ in. pots, 6 to 8 in. Spread.....	40.00	-----
4 in. pots, 12 in. Spread.....	60.00	-----

DAPHNE

D. cneorum (Garland Flower)		
Well rooted layers.....	30.00	200.00

GALAX

G. Aphylla		
Strong clumps.....	10.00	80.00

ILEX (Holly)

To succeed with Holly, all foliage must be removed before planting.

	(100)	(1000)
opaca (Amer. Holly)		
4 to 6 in. S.....	10.00	80.00
6 to 8 in. S.....	18.00	140.00
15 to 18 in., 2 year potted.....	30.00	280.00
crenata (Jap. Holly)		
4 to 8 in. S.....	6.00	50.00
8 to 12 in. X.....	14.00	120.00
glabra (Inkberry)		
6 to 9 in. S.....	9.00	80.00

KALMIA

latifolia (Laurel)		
9 to 12 in. S. Collected.....	8.00	55.00

LEUCOTHOE

cataesbaei		
6 to 12 in. S. Collected.....	10.00	80.00
6 to 12 in. Nursery Grown.....	30.00	260.00

MAHONIA

aquifolium (Oregon Holly)		
4 to 6 in., 2 yr.....	6.00	50.00
6 to 8 in. X.....	14.00	130.00

MAGNOLIA glauca

12 to 15 in. S., Nursery Grown.....	19.00	175.00
-------------------------------------	-------	--------

PACHYSANDRA Terminalis

Well rooted plants.....	10.00	70.00
Selected plants.....	14.00	95.00

PYRACANTHA Lelandi (Leland's Evergreen Fire Thorn)

16 to 20 in. from 4 in. pots.....	80.00	750.00
-----------------------------------	-------	--------

*RHODODENDRON

maximum		
9 to 12 in. S. Collected.....	8.00	55.00
9 to 12 in. with ball.....	20.00	-----
catawbiense and R. Carolina		
3 to 6 in. S. Collected.....	12.00	75.00
6 to 12 in. S.....	18.00	150.00

VINCA minor (Myrtle)

Strong clumps.....	8.00	65.00
--------------------	------	-------

From:

KELSEY NURSERY SERVICE
50 CHURCH ST.
NEW YORK CITY

Dept. of Agriculture,
Washington, D. C.

Sec. 435 $\frac{1}{2}$ P. L. & R.
U. S. POSTAGE
PAID
New York, N. Y.
Permit No. 11450

Do Not Fold or Bend